



# **KNOWHOW FROM SEINÄJOKI REGION**

**Seinäjoki**  
THE CAPITAL OF SPACE



# **WORLD-CLASS BUILDING SOLUTIONS**

from Seinäjoki Region

# CONSTRUCTION BUSINESS IN SEINÄJOKI REGION

- Number #1 for housing construction in Finland between 2012–2013 (per 10 000 residents)
- Total turnover of construction and building product business 860 M €
- Second largest business sector in the area in terms of number of companies
- Special knowhow in all parts of wood construction value chain as well as scientific research and development and education





## ALAVUS IKKUNAT OY

**WE OFFER OPENABLE-** and fixed windows, balcony-, exterior- and fire-resistant doors to European markets. We are known for our high quality, energy efficient products with excellent sound isolation.

Alavus Ikkunat Oy was founded in 2003, and we manufacture approximately 60,000 windows and 10,000 exterior and balcony doors annually. We have 6,000 m<sup>2</sup> of operating space and company headquarter in Alavus and sales offices in Turku, Tampere and Vantaa.

We are looking for customers and resellers mainly in Nordic countries.

"Quality windows and doors from a Finnish manufacturer"



**ALAVUS IKKUNAT OY**

P.O. Box 39

63301 Alavus, Finland

myynti@alavusikkunat.fi

<http://www.alavusikkunat.fi/en/>



## BETONILUOMA OY

**BETONILUOMA OY HAS OVER 60 years** of experience of producing concrete and concrete products. We provide elements for the various needs of diverse construction projects.

We make external wall elements for residential and office buildings, industrial buildings, agricultural buildings, and detached houses. We also provide special elements for, among others, bathrooms. Our production facilities are located in Southern Ostrobothnia, but our products are also delivered to all of Finland and the Nordic countries as well.

The latest production techniques, solid know-how, and continuous product development form the core strengths of Betoniluoma. We keep expanding our production systems to serve our customers even faster and better. We are known for manufacturing concrete structures that no-one even thought possible!

"Rock-solid Service!"

 **Betoniluoma Oy**

**BETONILUOMA OY**

PL 37

64701 TEUVA

info@hobetoniluoma.com

<http://www.betoniluoma.com/en>



## CLT FINLAND OY

**HOISKO IS THE BIGGEST** cross-laminated timber (CLT) manufacturer in Scandinavia with 40 000 m<sup>3</sup> annual capacity.

CLT is suitable for any kind of construction where wood is applicable. CLT is cost-efficient, ecological and safe construction material. Large building components are dry and quickly assembled. Structural bearing capacity and stability ensures that CLT can be used in very demanding environments. Wood as a material gives outstanding warmth and humidity balancing features that has proven positive impacts on health and quality of living.

Ask more information about new HOISKO Future School Concept!

"Your CLT Building Partner"



HOISKO

**CLT FINLAND OY**

Sahapolku 49

62940 HOISKO

info@hoisko.fi

<http://www.hoisko.fi>



## COLLABORATION -OJA ARCHITECTS + HIRVILAMMI ARCHITECTS LTD.

**THE CORE OF OUR WORK IS COLLABORATION** between our offices and with other experts. We believe that through collaboration we can achieve more. Our aim is to create good everyday architecture, schools, care and work environments. We can work as a expert consultant on a highest level concerning wooden buildings, housing and kindergarten design. We are collaborating with experts both in Finland and abroad –especially in China. With the joint venture of two office's resources and expertise, we can provide high quality design and efficient project management for our clients.

### KAIVO-OJA

#### KAIVO-OJA ARCHITECTS

Mansikkaviita 27 B  
60150 Seinäjoki  
+358 50 3691824  
anne@kaivo-oja.fi



HIRVILAMMI ARCHITECTS LTD

#### HIRVILAMMI ARCHITECTS LTD.

Honkakuja 16  
60100 Seinäjoki  
+358 45 1953560  
teemu@hirvilammi.archi



## FINNGLASS OY

**FINNGLASS IS KNOWN AS** a technically advanced supplier of various glass products in construction business. Finnlass has developed an electrically heated glass that has been successfully manufactured for over 25 years.

Clients are both customers in Finland as well as the leading glass/metal contractors in the world. Finnlass has exported heated glass panels for more than 20 years to Scandinavia, Russia and Europe. In Finnlass all the key processes are under the same roof; Design, glass strength calculations, electrical design of glass, cutting, grinding, tempering, lamination, manufacturing of electrically heated glass and production of insulating glass units.

"Electrically Heated Glass"



### FINNGLASS OY

Asematie 46

63400 ALAVUS

timo.saukko@finnlass.com

<http://www.finnlass.com/en/index>





## FINNLAMELLI OY

**THE ROOTS OF FINNLAMELLI ARE** firmly in the log house tradition of the Alajärvi region, where the industrial production of laminated logs was initiated over three decades ago for the first time in Finland. The same expertise, active product development and top-of-the-line technology keep Finnlamelli log houses at the forefront of development.

Export has been an important part of Finnlamelli's operations from the start, and now almost 40% of the production goes to export. Finnlamelli has an extensive network of distributors in numerous countries – healthy and attractive housing is appealing regardless of your cultural background. Our main export areas include Central Europe, Nordic countries, Russia and Japan.

Finnlamelli is a well-known and respected log house manufacturer throughout the world.



### DEN FINLAND OY FINNLAMELLI

Teollisuustie 18 / POB 68  
62900 ALAJÄRVI  
FINLAND  
tel +358 207 463 962  
export@finnlamelli.fi



## HELLSTEN FLOORING OY

**WE'RE SPECIALIZED IN** manufacturing woven vinyl flooring and tiles. As a material we use specially designed plastics made for this purpose. Vinyl flooring is perfect in public use such as banks, hotels, shops, offices and private use such as halls, kitchens, balconies, stairs. The benefits of the vinyl flooring are:

- lasting and safe, colours stay brilliantly even under UV light
- easy to maintain and clean
- insulating, soft and pleasant feeling under the feet, sound absorbing
- can be cut in any direction without fraying
- easy to install and instantly ready to use

Please, check the versatile collection on web pages!

"Hellsten Flooring  
produces your  
flooring and tiles"

**Hellsten**  
FLOORING

**HELLSTEN FLOORING OY**

Lanssikuja 2

60800 ILMAJOKI

info@hellstenflooring.fi

<http://www.hellstenflooring.fi/>



## HUVILA SEPPÄLÄ OY

**THE CORNERSTONE OF OUR BUSINESS** is to continue the traditions of Finnish wood construction without neglecting the latest innovations. We are constantly developing our range of models and our methods. This allows us to offer individual deliveries according to your particular needs. Our raw material is selected slow-growing, dense pine. All our log buildings meet standards and quality requirements. Since we are responsible for the whole chain of production, we can guarantee the high quality and reliability of our products. Huvila Seppälä is an international operator, heavily involved in the European and Japanese log home markets, where the bulk of our products are delivered.

“Log houses of all sizes  
according to your request”



**HUVILA SEPPÄLÄ OY**

[www.huvilaseppala.fi](http://www.huvilaseppala.fi)

[tapani.taipale@huvilaseppala.fi](mailto:tapani.taipale@huvilaseppala.fi)

tel. +358 400 619 458



## KAARITAIVUTUS KUMPULA OY

**WE ARE SPECIALIZED** in the production of curved structural steelwork and arched shapes of massive steel beams and plates.

Our core competence is in getting big straight beams precisely arched using a method called cold-bending. Our 20-year expertise in curved steelwork makes us the best partner in planning, consulting and producing all work related to demanding bending tasks.

We help industries make beautiful shapes from massive beams and plates for steel constructions, spiral staircases, cruise ships and oil tanks, to name a few.

We operate globally through Finnish metal construction builders. Our knowhow is used eg. in buildings in Sweden and Norway, oil tanks in Georgia and luxury cruises in Caribia.

“The Biggest Bended  
Beams in Finland”

***Kaaritaiivutus***

**KAARITAIVUTUS KUMPULA OY**

Laurinviita 9  
60150 SEINÄJOKI  
sales@kaaritaiivutus.fi  
www.kaaritaiivutus.fi





## KORPELA FLOORING OY

**WE PRODUCE WOVEN VINYL FLOOR** coverings which is modern and economic choice on the floor. Our SUVI flooring fits from public buildings to apartments and from indoor to outdoor. We have long experience in weaving industry which guarantees the quality of our SUVI flooring products.

SUVI flooring products are easy to install and ready to use right after installation. SUVI flooring is hygienic and easy to keep clean as the material is water and dust repellent. Also SUVI Metallic vision collection available with metallic twist.

Please, check the versatile collection on web pages!

“The best quality  
under your feet”

**KORPELA**  
Flooring

### KORPELA FLOORING OY

Kauhajärventie 236  
62295 KAUHAJÄRVI  
info@korpelaflooring.fi  
<https://korpelaflooring.fi/>



## KNX-TALOAUTOMAATIO OY

**WE ARE LIVING IN THE MIDST** of a global energy transition. KNX-Taloautomaatio Oy was founded to revolutionize home management through automation with a sustainable long-term user-friendly solution called Homiez Ecosystem. Utilizing energy optimization, we want to save our users' time, money and natural resources. The demand for environmentally friendly solutions helps create a more sustainable future and improve society's energy efficiency. This is the future that we want to help build.

We believe that the transition is only a matter of time. We would like to do our part in speeding up the process by making new technologies and systems simple and effortless to implement. This will free up a significant amount of consumers' resources for other purposes. The right to self-determination is important to us, so we want to provide everyone with the best possible opportunities to determine how to allocate their own resources.

"Thinking ahead"



### KNX-TALOAUTOMAATIO OY

Päivölänkatu 3 C  
60120 SEINÄJOKI  
samuli.viitanen@knx-taloautomaatio.fi  
www.homiez.fi

## KVS OY

**KVS OY PROVIDES UNIQUE** and energy-efficient solutions. Our services include lighting and interior design, in addition to electrical planning and installation. The company's main goal is to guarantee that the customer receives correctly designed and implemented lighting which is supported by appropriate interior design.

KVS Oy represents Finnish home automation system called Talomat. Talomat system is unique as the system uses a 12/24 V DC voltage between all system components (power supply, control, sensors and lighting). Talomat brings modern benefits:

- a large part of the electricity used in the building, can be produced by the system itself.
- system has a 12V battery as a backup power source which stores energy and keeps all the 12V components active during a power outage. Battery is charged by solar panels or wind turbines. This keeps the house safe and comfortable as well as environmentally friendly.

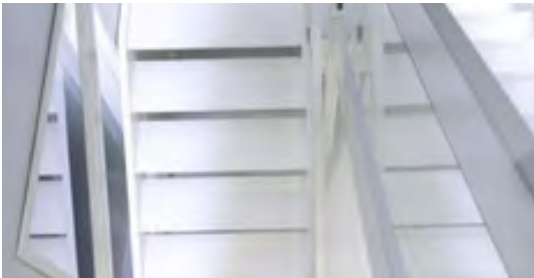
Talomat creates value especially in countries with high risk of power cuts or in targets where electricity is difficult to get eg. cottages.

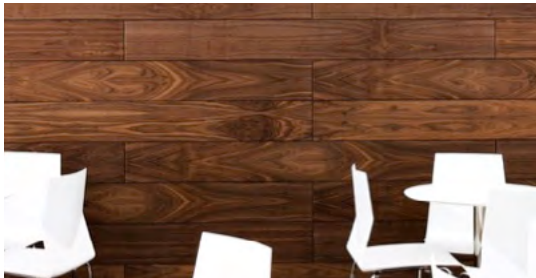
"Unique and energy-efficient solutions"



**KVS OY**

Vanhankylänkaari 13  
60320 Seinäjoki  
info@kvssoy.fi  
www.kvssoy.fi





## LAATUPANEELI BY P. ROTOLA-PUKKILA OY

**WITH LAATUPANEELI'S GENUINE** hardwood interior panels you create even demanding spaces elegant and individual. Laatupaneeli surfaces bring warmth and life, retaining their value over time. With our panels you can create a ready surface easily and with affordable price.

The colour options are walnut, oak, black ash, rustic ash, ebony, zebrano and wenge. The manufacturer's many years of experience guarantee a safe purchase and fantastic value for money. Available product categories are: ceiling and wall panels, sauna/terrace panels and skirting boards and corner moulding.

"Sense of warmth"



### P. ROTOLA-PUKKILA OY

Lustilantie 27  
61800 KAUHAJOKI  
timantti@kauhajoki.fi  
<http://www.laatupaneeli.fi/>





## LISTATALO OY

**LISTATALO LTD MANUFACTURES MOULDINGS** and panels, specializing in wood surface treatment. Listatalo mouldings and panels are manufactured using only the highest quality raw materials. The mouldings and panels are made either of wood or MDF.

We use PEFC certified rawmaterials from sustainably managed forests.

Listatalo's surface treated mouldings and panels are designed for timesaving and effortless installation. Our products give your home a finished, impeccable look.

Listatalo delivers high quality moulding and panel solutions in Finland and selected export markets.

Please, check the versatile collection on web pages!



### LISTATALO

Tiemestarintie 17  
61600 JALASJÄRVI  
matti.hakkinen@listatalo.fi  
[www.listatalo.fi](http://www.listatalo.fi)



## LUOMAN OY

**LUOMAN IS A FAMILY BUSINESS** that has been active in the world of garden building for over three decades already. From our production line leaves tens of thousands buildings, for different kind of customers and gardens need, every year.

Not only do we have the largest production capacity on the market, but the quality of our timber buildings is in its own class – to the extent that other tend to follow us.

At the moment Luoman has production or sales in Finland, Germany and France. Our high quality products are exported to more than 30 countries worldwide, where they can be purchased through our dealers, mainly hardware stores. As an addition, our products are also available through our web shops.

“Wood is in our nature”



### LUOMAN OY

Vatajantie 13  
61450 SEINÄJOKI  
pekka.luoma@luoma.fi  
<https://luoman.fi/>

## M-PARTNERS OY

**M-PARTNERS OY DEVELOPS** and manufactures variety of portable buildings, temporary buildings and special enclosures. They are market leader in their special field.

M-Partners' portable buildings can be used as schools, daycare centers, office buildings or even as regular homes. All buildings are designed to the requirements of a static building, but thanks to their portability, they can be used in a number of locations during their life cycle. They can also be adapted as needed.

Many school buildings are in the need of refurbishment, and problems with indoor air quality have become commonplace. Temporary structures offer modern and comfortable learning environments for the duration of repair works.

Special enclosures include e.g. mobile hospitals in disaster zones, special trailers for Hollywood action movies or fast food outlets.

M-Partners is not fazed by any situation, no matter how demanding. They deliver enclosures for various types of projects around the world.

"A New Energy-  
Efficient Generation of  
Buildings"



**M-PARTNERS OY**

Horontie 238

64700 TEUVA

info@m-partners.fi

<http://www.m-partners.fi/en/>





## MUOVILAMI OY

**MUOVILAMI OY IS A SPECIALIST** in manufacturing hygienic GRP (glass reinforced polyester) doors. LAMI GRP doors have been developed with decades of experience for the most demanding environments where no other door material will suffice. Use LAMI GRP doors in premises that require hygiene, water and moisture resistance and durability.

Benefits using Muovilami GRP doors: \*Water & Moisture Proof  
\*Chemical Resistance – Hygienic \*Corrosion Free \*Long Life  
Expectancy \*Light Weight and Safe to Use \*Fire Safety \*Easy  
Installation with Choice of Frame Systems \*Co-ordinated Outlook

"Hygienic GRP Doors"



**MUOVILAMI OY**

Yrittäjäntie 5  
63700 ÄHTÄRI  
hans.naupert@lamidoors.com  
<http://www.lamidoors.com>





## NORDIC BAMBOO OY

**BAMBOO FLOORING BY** Nordic Bamboo – The Most Durable Flooring Solution on the Market

Traditional parquet flooring has met its match – Nordic Bamboo's bamboo flooring is 2.5 times harder than oak parquet. Bamboo feels warm under barefoot, making it a perfect fit for Scandinavian interior designs. Bamboo Flooring is especially well-suited for public spaces, stores, hotels and offices.

We're specialized in manufacturing LED hard wax oiled bamboo flooring in Lapua, Finland.

We are looking for customers and resellers mainly in Nordic countries.

"Beautiful & Durable  
Bamboo Flooring"



NORDIC BAMBOO

**NORDIC BAMBOO OY**

Tiemestarintie 17  
Kelikontie 5  
62100 Lapua  
info@nordicbamboo.fi  
nordicbamboo.fi



## OOPEAA OY

**ANSSI LASSILA IS THE FOUNDER** and principal of OOPEAA. His architecture displays an interest in combining a sculptural form with traditional materials and innovative techniques. Lassila has extensive experience in working with wood in architecture. OOPEAA works on a wide range of projects on varying scales from churches and daycare centers to housing and town planning.

OOPEAA has been honored with significant awards both in Finland and abroad, including the Finlandia Prize for Architecture in 2015, the Wood Architecture Award in 2015, the Canadian Wood Design and Building Award 2016, and the American Architecture Prize 2016 in two categories. The work of the office has also been selected for the shortlist in the Mies van der Rohe European Prize for Architecture in 2005, 2011 and 2017.

### OOPEAA

#### OOPEAA OY

Tiedekatu 2  
60320 SEINÄJOKI  
anssi.lassila@oopeaa.com  
<http://oopeaa.com/>



## PAUTEC OY

**PAUTEC OY IS A DEVELOPING** company, specialized in steel frame solutions. Their services include the design, manufacture, supply and installation of a variety of steel frame solutions. Pautec carries out steel construction works as a turnkey service. The background know-how of the company lies in the long-term experience that our shareholders have in steel construction.

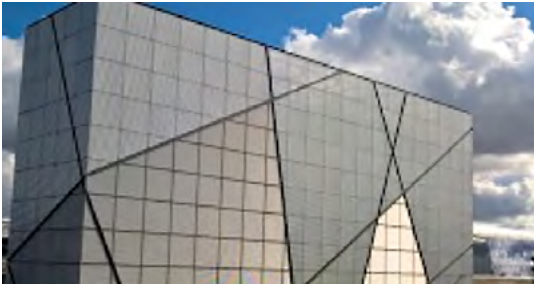
Pautec serves construction companies, developers and companies, both in Finland and Scandinavia.

"Steel Construction  
Specialist in Your Service"



### PAUTEC OY

Insinööriväylä 1  
60100 SEINÄJOKI  
Pauli.lahdemaki@pautec.com  
[www.pautec.fi](http://www.pautec.fi)



## PP-TUOTE OY

**AT ONE OF THE MOST BEAUTIFUL** locations in Finland – On the historical fields of Lapua we've made shiny quality stainless steel design for decades. We haven't given up on design related problems, but thrived through the ideas which formerly felt quite impossible. This standard has made possible convenient and cost-effective products and conquering new markets.

One of the most stylish solutions we offer is perforated plate facade construction. Extremely hard stainless perforated plate is a stylish choice for facades and interior design. Perforated plate can be used almost everywhere, where only the imagination is the limit. Lightning gives these plates countless new dimensions and variations on color and shading possibilities with the design.

Plates are possible to get with the normal pattern or according to custom-made design patterns. If needed we can also help with designing the facades.

"Finnish quality design  
and manufacturing"



**PPT-TUOTE OY**

Poutuntie 15  
62100 LAPUA  
info@pp-tuote.fi  
<https://pp-tuote.fi/en/home/>





## SALTEX OY

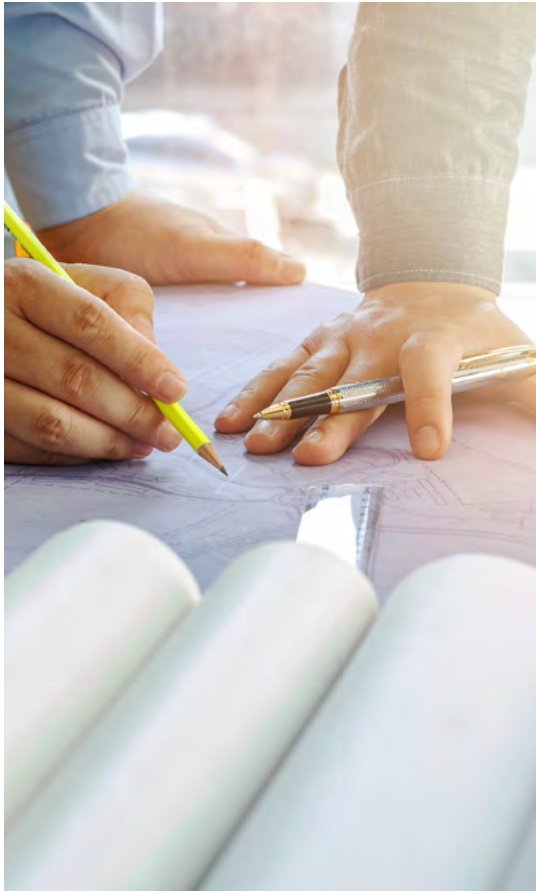
**SALTEX, PART OF THE UNISPORT GROUP** and a FIFA Preferred Producer, is an artificial grass producer with its own modern production facilities located in the Northern Europe. Saltex is known for its drive for innovation and high quality products, with a focus on developing artificial grass systems that meet and exceed the expectation of players and owners of sport facilities throughout the world.

Saltex Oy has a certified ISO 9001:2008 quality system and ISO 14001:2004 environment system. Quality development is implemented at all levels and all operations of the company. Saltex Oy has over 25 year experience of artificial grass installation and maintenance. We participate actively in international development projects of the industry and became a FIFA Preferred Producer in the beginning of October 2011.



### SALTEX OY

Sahatie 1  
62900 ALAJÄRVI  
saltex@saltex.fi  
<http://www.saltex.fi/>



## SARMAPLAN OY

**SARMAPLAN OY IS A SOLID** engineering professional. Our main areas of expertise are Structural- and Plant Design. In our customer base you will find satisfied customers from a multitude of different industrial branches. References being Steel Structures for Ranheim Stadion in Trondheim and Ulf Stadion in Stavanger.

The mission of Sarmaplan Oy is to be reliable and flexible partner for our customers. Our highly skilled and experienced team of 10 engineering professionals openly welcomes also the most demanding projects. To date we have seen hundreds of projects through to a beneficial and satisfactory conclusion for our partners. Utilizing our 20 years of experience we will find the appropriate solutions for your project as well.

In our design process we always rely on current, up-to-date standards for each field of design and put great value on fulfilling our part of all agreements with our partners.



### SARMAPLAN OY

Heikki Mäkelä

tel. +35850 5596102

heikki.makela@sarmaplan.fi

www.sarmaplan.fi



## SEIKAT OY

**LIGHTWEIGHT WOODEN BALCONIES** delivered as prefabricated modules are cost efficient, swiftly installed and opens up new architectural freedoms in building façade designs. OIVA-balcony gives special personality and charm to buildings. They are suitable for all kinds of new or old buildings.

OIVA-balconies with their considerably smaller carbon footprint compared to concrete balconies are an eco-friendly choice. A major plus is their manufacturing in Finland: Made from locally sourced CLT with short transportation routes.

Ask more information about OIVA-balconies!

"Professional of wooden balconies"

### SEIKAT OY

Reiniläntie 60, 61400 Ylistaro  
juha.haapaniemi@seikat.fi  
[www.seikat.fi](http://www.seikat.fi)



## SEMKO OY

**OUR MAIN PRODUCTS ARE** different fastening plates, foundation bolts etc. to concrete elements, concrete handling equipment and lightweight steel structures. We can also offer customized products with wide range.

For designers we offer designs and carefully engineered metal products that can be diversely utilised in building design. In the designing stages, you are granted an access to our instruction guides for use and making calculations to add flexibility and make designing structures easier.

"Build upon our expertise"



**SEMKO OY**

Tehtaantie 8  
60100 SEINÄJOKI  
jarmo.koski@semko.fi  
<https://semko.fi/en/>



## SKAALA GROUP OY

**SKAALA IS A FINNISH COMPANY** where strong tradition and expertise in woodworking industry are combined with modern production methods and pioneering product solutions. Skaala is known particularly for its energy-efficient product family and holistic service concept. In addition to a strong share on the home market, Skaala's products are exported mostly to Sweden, the UK and Russia.

In 2016, Skaala's turnover was approximately €96 million and the average number of employees is about 400. Company headquarters is located in Kauhava, Southern Ostrobothnia. Skaala has been recognized with several prizes related to product development, quality, energy efficiency and sustainable development.

From October 2017 on Skaala is a part of international IFN Holding AG. IFN is a network of reliable partners in the window business for the smart buildings of the future.

"Scandinavian Comfort"

**SKAALA®**

**SKAALA GROUP OY**

Yrittäjätie 25  
62375 Kauhava  
info@skaala.com  
www.skaala.com





## SLP OY

**SUOMEN LÄMPÖPUU - SLP OY** IS one the pioneers in the world for producing thermo-treated wood products. SLP Oy main product groups are for exterior cladding and terrace construction.

The raw material for SLP products is primarily Finnish, PEFC-certified pine and spruce (*Pinus Sylvestris* and *Picea Abies*). Slowly grown, dense northern wood is an excellent material for thermal treatment. Thank to thermal treatment processes no chemicals are used in the production process. Thermo-treated products are thus exceptionally natural and environmentally friendly.

Over 90 % of the production goes to export. We ship ThermoWood® products throughout Europe as well as to other continents.

"Enjoy Natural Wood"



### SLP OY

Horontie 166

64700 TEUVA

juha.palonen@suomenlampopuu.com

<http://www.suomenlampopuu.com/en/>

Reference by Piantek



## SPECIAL TAILOR MADE FURNITURE TO PUBLIC BUILDINGS

### **WWW.PIANTEK.FI**

Malls&shops, restaurants, ship industry and other demanding spaces

### **WWW.JEWALL.FI**

Malls, shops, displays, apotheque

### **WWW.MAISERI.FI**

Exhibition stands, events, restaurants, showrooms

### **WWW.JUNET.COM**

Furniture for nursing homes and other public spaces

### **WWW.KURIKAN.COM**

Special room dividers to public buildings

### **WWW.HIRVELAOY.FI**

Furnitures to all business premises

"Special Carpenter Knowhow"



## TIKLI GROUP OY

**OUR HIGH QUALITY ALUMINUM** stepladders and steel roof safety products, have been successful among a growing and satisfied clients. Learning from our experience with Tikli-products, aluminum has shown itself to be a practical and reliable material. Therefore, we have expanded our Tikli product family and today we offer also aluminum windows and doors, fences, storages and sheds and public facades.

Tikli Group Oy was officially established in Vimpeli in 1992 although the company has roots dating back to the 1960s. Vimpeli is located in South Ostrobothnia. We employ 40 people and the current turnover is app. €11 million.

"Reach higher"



**TIKLI.**

**TIKLI GROUP OY**

Yhdystie 40  
62800 VIMPELI  
jani.lassila@tikli.com  
<http://www.tikli.com>



## VM CARPET OY

**VM CARPET IS THE BIGGEST** carpet manufacturer in Finland with 45 years know-how of materials and carpets. VMC Project is a part of VM Carpet and it stems from a desire to provide beautiful VM Carpet rugs for project-oriented clients eg. architects, interior designers, project resellers and companies as an expert on textile rugs.

In addition to VM Carpet's own production, VMC Project provides hard-wearing rugs for public spaces manufactured by our strong, long-term partners from Central Europe. VMC Project serves interior designers in their projects and finds solutions for various rug-related needs, acoustics problems and demanding spaces.

Tell us about your project or ask about our expertise.

**VM Carpet®**

**VM CARPET OY**

Karvalantie 79  
62630 Karvala, Finland  
minna.kivela@vmcproject.fi  
<http://www.vmcproject.fi/en/>



# Seinäjoki

THE CAPITAL OF SPACE

Business investments by 2021

**over €1 billion** 



**6th biggest**  
market area in Finland

**Number 1 city of  
entrepreneurship**

(Confederation of Finnish Industries 2017)



**3rd highest**  
number of active companies  
in relation to population

**1 000 hectares**  
of new business areas



**63 000**  
residents  
(+0,85 % in 2016)

**10 000**  
students



(second level &  
higher education)

**Right in the middle**  
of the Helsinki-Oulu  
growth corridor

Oulu

2h 44min

Seinäjoki

2h 50min

Helsinki

We have space for all  
**the good things**